



# Strip Armouring

## V16 50mm/2.0in BX MACHINE

A flexible metallic conduit for the physical protection of Wire, Cable, Hose, and Flexible Pipe products. It is ideally suited for Building wire (MC and AC), Data, Fiber Optic, Safety, Fire Alarm as well as Specialty Hybrid cable assemblies. This layer complies with many electrical codes as an alternative to rigid steel and aluminum conduit, allowing quick and easy installation.

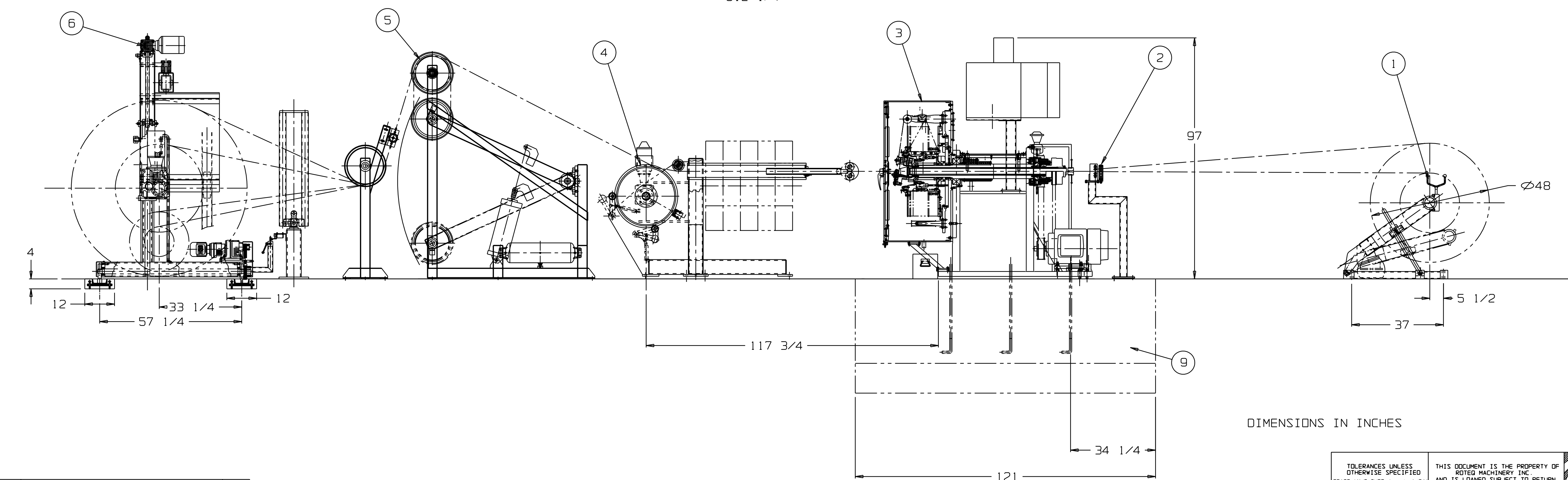
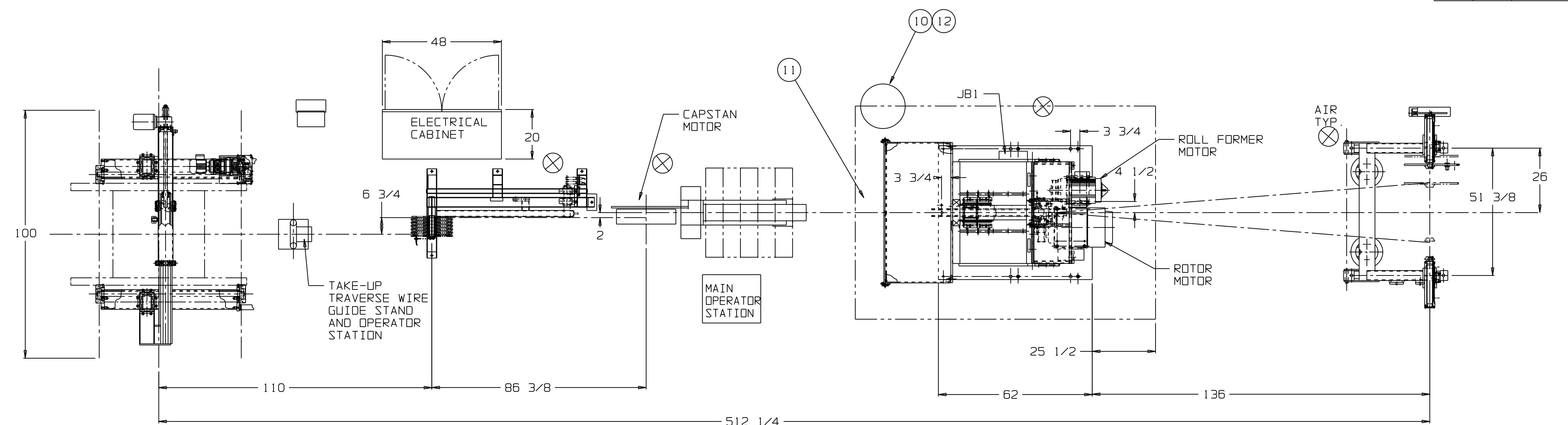


## V16 Strip Armouring Machine Features

- Typical operating speed of 1200 RPM with strip feed speeds up to 100 m/min or 330 ft/min
- Typical strip widths between 6.0-18.0 mm; 0.25-0.75 in
- Package size 36 in (900 mm) OD x 12 in (300 mm) wide and weight up to 1500 lb (700 kg)
- Typical materials include Aluminum, Galvanised Steel, Stainless Steel among others
- Motorized strip tension system ensures constant strip tension throughout speed range and strip coil depletion
- Tool-Less strip coil changes with spring activated/pneumatic release strip coil chuck and wrench-less self-adjusting front coil plate speeds coil changes and minimizes operator training requirements
- Off-line tooling setup reduces downtime and process variation
- Low maintenance requirement with AC motors, no slip rings, no rotary air seals, and motorized strip tension
- Product specific tooling with product performance guarantee for common products
- Advance enclosure ventilation system separates lubricant and exhausts air through a HEPA filter
- Metered lubrication minimises usage while maintaining film for high speed operation
- Touch screen HMI integrates all line components with product recipes and key variable trending
- Integrated drive and control package with auxiliary equipment to suit each application
- Plate guard panels, sealed enclosure doors with open door lubricant containment and safety interlock ensure quiet and safe operation



ITEM	QTY	DESCRIPTION	MFG. REF. / DRG. NO.
1	1	48" PAY-OFF	
2	1	PAY-OFF WIRE GUIDE	
3	1	ARMORING MACHINE WITH BRAKE	
4	1	24" CAPSTAN	
5	1	ACCUMULATOR AND DANCER	
6	1	72" TAKE-UP	
7	1	AIR SCHEMATIC	
8	1	DRIVE SCHEMATIC	
9	1	FOUNDATION	
10	1	SS LUBE TANK 15 GAL. GRACO	
11	1	FOOT SWITCH & GUARD: SCHNEIDER	
12	1	COOLUBRICATOR UNIT	
13			



DIMENSIONS IN INCHES

TOLERANCES UNLESS OTHERWISE SPECIFIED: FRACT. (M/C SURF.) +/- 1/64" XX (M/C SURF.) +/- 0.010" .XXX (M/C SURF.) +/- 0.005" NON M/C SURF. +/- 1/32" ANGLES +/- .15" CONCENTRICITY 0.002" T.I.R. SQUARENESS 0.002" T.I.R. PARALLEL 0.005"	THIS DOCUMENT IS THE PROPERTY OF ROTEQ MACHINERY INC. AND IS LOANED SUBJECT TO RETURN ON DEMAND UNDER ANY CIRCUMSTANCES. IT IS TO BE REPRODUCED OR COPIED IN WHOLE OR IN PART. THE CONTENTS ARE CONFIDENTIAL AND MUST NOT BE SUBMITTED TO OUTSIDE PARTIES FOR USE OR EXAMINATION. ALL PRODUCTION AND INTELLECTUAL RIGHTS RESERVED.		Roteq Machinery Inc. 317 Bradwick Drive, Concord, Ontario, Canada, L4K 1K5 Tel 905-660-8800, Fax 905-660-8898	
			TITLE STRIP ARMORING LINE LAYOUT DRAWN P.J.W. DATE 06/16 SCALE 1:25 DWG. NO. 500-289-000-0	

NO.	DATE	REVISIONS	BY